



# Seismic

## EPI Remote Land Seismic QC

Remote QC of your Land Acquisition Operations, with EPI's Technical QC and Reporting software - EPIQC

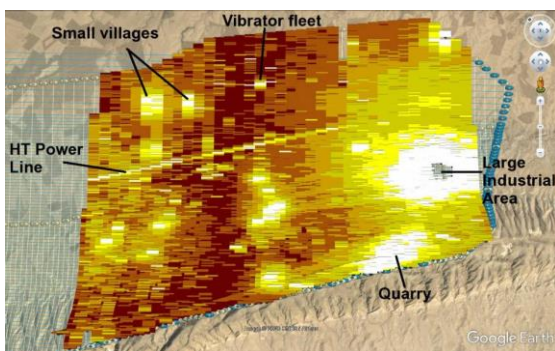
### Thorough interrogation of data:

- Line Unit instrument test files - Sercel FDU and all current Node Systems
- Geophone tests - Geophone string specifications/rotation frequency
- Vibrator Status Files - from any source controller VAPs, APS, PSS files, for phase, distortion, force
- Positional Data Files - survey preplot and postplot data, Final SPS files
- Dynamite - Blaster uphole times
- Crew Daily report and production QC - cross referenced against observer logs

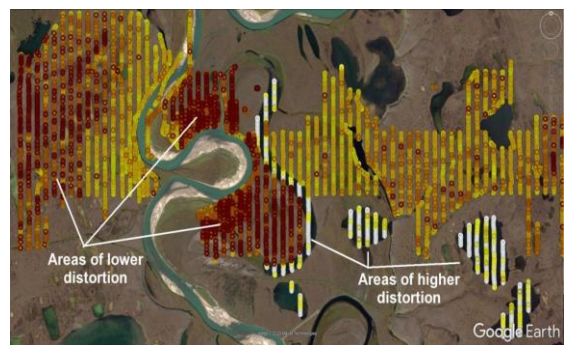
### Advantages provided by EPIQC:

- Fast, accurate analysis of all the system components
- Early Identification of problem line and source equipment
- Ability to interrogate source controller files for individual vibrators
- Nodal equipment checked before re-deployment to field
- Survey position data verified
- Geographical display of results in heatmaps for any dataset with position coordinates

# Seismic



*Line noise heat map*



*Vibrator distortion heat map*

## Deliverables:

- Fully formatted Word daily report – checked against production and observers logs
- List of out of spec equipment by serial number / vibrator number to be verified by the crew
- Analysis of out of spec source sweeps / units against terrain conditions
- KMZ file of all data with coordinates displayed on Google Earth, with out of spec data flagged
- Feedback and coordination with the crew over Skype/ Teams/ WhatsApp etc\* bandwidth dependent
- Fully archived record of all crew system data files, crew and client reports