

Geoscience

Mentored Learning – Development

EPI's mentored learning is different. We deliver training and mentoring designed to meet your specific project and team needs. Training can be provided using your projects' data – to simultaneously develop your team whilst working up your asset. Our experts provide tailored training covering the full E&P cycle.

It is generally acknowledged that 60-80% of learning takes place when you apply what you have learnt. Traditional training courses rapidly lose their effectiveness the longer the time between actual training and using it on the job.

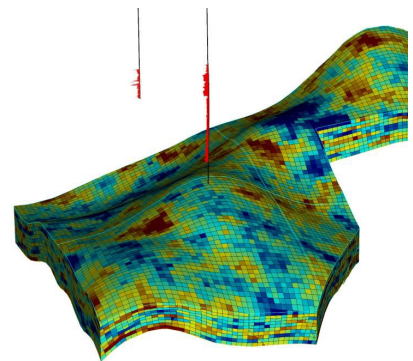
Our experts utilise their significant experience to provide mentored learning which covers the fundamentals across the full E&P cycle. Incorporating real-world problems that your team are working on ensures that the learning is applied whilst working up your assets, for maximum knowledge retention by the participants. All training is given in complete confidentiality.

Our mentored learning is fully bespoke, tailored to your requirements, and can include any combination of the topics outlined below:

Field Development Expertise

- Seismic sequence stratigraphy & facies modelling
- Fractured reservoirs
- Reservoir diagenesis
- Core and field analogue workshops (conventional & unconventional fields)
- Geological models for unconventional resources
- Petrophysics
- Reservoir modelling
- Reservoir engineering
- Performance engineering optimisation
- Economics analysis

“our experts have over 20 years expertise imparting knowledge and mentoring clients, including independents, NOC's & supermajors”



All courses can be undertaken either at your offices or, if you prefer, at one of our training facilities in the UK. Course duration and content can be fully tailored to fit with your teams experience, availability and requirements.



EPI
Group

For more information visit
epigroup.com

The Upstream Consultancy
© 2019 EPI Group – All rights reserved.



How does EPI mentored learning work?

EPI mentors deliver knowledge and practical skills, expertly built around your exploration and production projects and personalised to the appropriate level for the participants involved, while using the software of your choice.

We will design a programme which fits the requirements and critically uses your datasets as the basis of the practical exercises. In this way, your staff are mentored in how to directly apply their newly acquired skills and knowledge to data from live work programmes, rather than idealised case studies. We have complete flexibility on where the training is delivered, reducing travel expenses and the disruptive impact training courses can have on ongoing work programmes.

Field-based courses can be provided using surface outcrops near or in your exploration and production licenses, evaluating the actual rocks present in the subsurface. We can also suggest the most appropriate field analogue locations if these are more practical and cost effective to visit.

Who delivers EPI Training?

Our courses are tailor-made to your needs and we utilise our extensive global network of associates to ensure that the best people deliver your course. EPI's training programmes are coordinated, and often delivered by our senior team, which includes:



Dr Matthew Watkinson

Matthew is a sequence stratigrapher and sedimentologist with experience in every kind of sedimentary basin setting and depositional systems from basin floor turbidites to lacustrine carbonates. Matthew is highly experienced in the analysis and integration of seismic, well-log, core and field data for both conventional and unconventional resources. Matthew is Associate Professor in Petroleum Geology at Plymouth University, UK, and has 30 years' experience in teaching petroleum geology and geophysics, as well as supervising PhD students.



Dr Mark Enfield

Mark is an exploration geoscientist and oil industry innovator with over 25 years' experience and a proven track record working throughout the E&P cycle. Mark's experience of hydrocarbon exploration extends across highly diverse geological settings globally, and he is noted as a specialist in structural analysis, New Ventures, Play Fairway Analysis and Charge Modelling. Mark holds a PhD in structural geology from Imperial and is proud to be a PESGB Young Professionals mentor.