



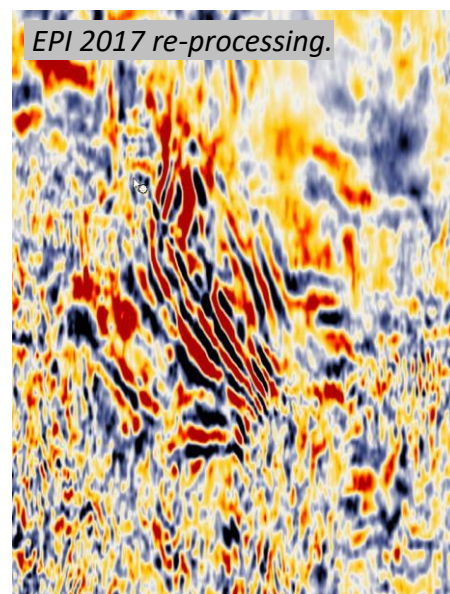
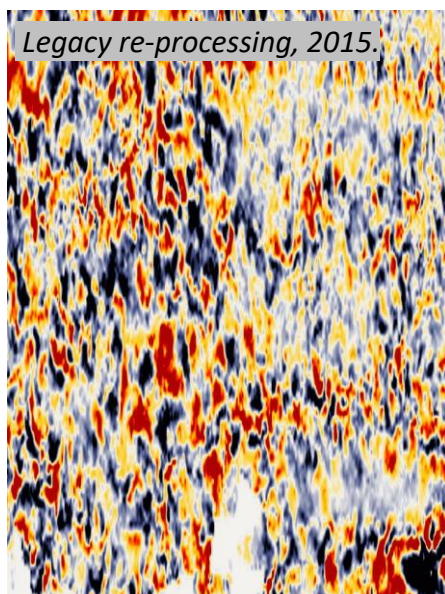
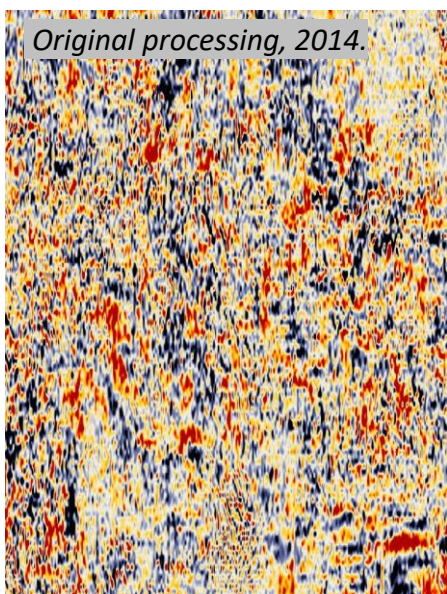
## AGS™ - Advanced Geophysical Solutions



For more information visit [www.epigroup.com](http://www.epigroup.com)

# Enhancing the Processed Image

EPI's bespoke seismic data re-processing service



Example time-slice of legacy 3D data recently re-processed by EPI using Shearwater Reveal (OpenCPS) software. (Permission to show these data was kindly provided by Egdon Resources U.K. Limited, United Oil and Gas Limited, Aurora Petroleum (UK) Limited, and Corfe Energy Limited.)

### Why use EPI?

- EPI offer bespoke testing and sequence development, along with small volume production processing - providing a truly individual processing service.
- For larger surveys feasibility testing can be run in-house to establish optimal parameters prior to passing the full dataset to a partner company to run the main production processing. EPI's partners also use Reveal, ensuring quick and seamless transition from testing to production.
- All EPI geophysicists have a minimum of 20 years' experience and handle the imaging from start to finish.
- Our pre-processing includes advanced statics, denoise and de-multiple techniques such as 3DSRME and SWME.
- Our Time and Depth imaging solutions include Kirchhoff, Beam, Common Reflection Angle and Reverse Time Migration.

For more information about EPI's re-processing services, please contact [ags@epigroup.com](mailto:ags@epigroup.com).