



# EPI Group - Unconventionals



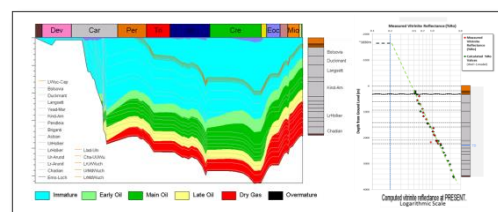
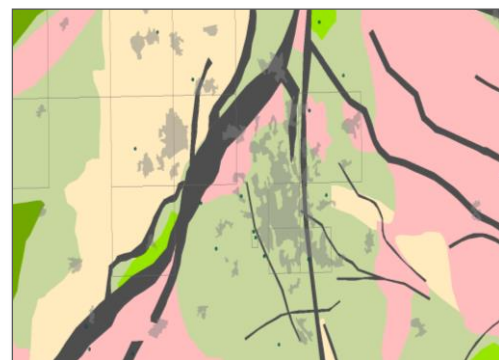
For more information visit [www.epigroup.com](http://www.epigroup.com)

EPI Geoscience's (formerly 'P.D.F. Limited') multi-discipline team have significant expertise in the assessment of 'unconventional' (continuous resource) plays, with extensive track record of in-depth evaluations of 37 plays in 23 basins across 9 countries worldwide (including onshore US).

Our expert team focuses on the innovative application of geological concepts and bespoke play fairway analysis techniques which have been carefully remodelled to understand and predict the distribution and potential of unconventional plays.

### Core services include:

- **Play Fairway Analysis** - our proven and tested methodology, refined specifically for unconventional evaluations, enables rapid prediction of sweet-spots and high-grading of acreage
- **Basin Modelling / Thermal Maturity** - our experts take special care to ground-truth and reality check models to construct accurate and geologically realistic burial histories and heat flows
- **Sequence Stratigraphy / Tectonostratigraphy** - world class knowledge in the construction and application of predictive frameworks to enable detailed basin modelling and source rock maturation & lithologic variation de-risking
- **Core Analysis** - full spectrum capability, including high resolution shale/clay logging, facies analysis, XRD/SEM, petrography and fracture characterisation
- **Exploration Fieldwork** - rapidly ground-truth models and characterise play elements through rigorously exploration focused analysis and sampling of field outcrops, for sub-surface play prediction
- **Rock Mechanics** - EPI's strategic partnership with a UK-based rock mechanics laboratory, provides access to leading-edge expertise in rock mechanics and the optimisation of development techniques



The EPI team's proven and drill bit tested, hands on experience of unconventional plays, combined with our full spectrum capability, allow us to provide bespoke, practical and commercially viable solutions to a variety of complex technical problems.